

# 5/2 MIXED VALVES (1/8"-1/2") Series AC

## AC

### MIXED threaded valves G1/8 - G1/4 - G1/2

- Mixed commutation system (spool - poppet)
- High flow rate
- Quick response time
- High cycles
- Control: manual, mechanical, pneumatic, electric
- Modular sub-bases



### TECHNICAL CHARACTERISTICS

Ambient temperature	-10 ÷ +45 °C		
Fluid temperature	max +50 °C		
Fluid	filtered air 50 µm, lubricated or not		
Commutation system	poppet mixed system		
Ways/Positions	5/2		
Pressure	10 bar max		
Control	pneumatic, electric, mechanical		
Return	pneumomechanical spring, pneumatic, electric		
Connections	G1/8	G1/4	G1/2
Nominal Ø (mm)	6	8	15
Nominal flow rate (NI/min)	1080	1600	4600

### CONSTRUCTIVE CHARACTERISTICS

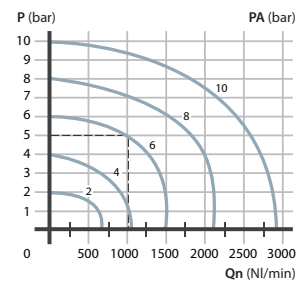
Valve body	G1/8 - G1/4 = zamak G1/2 = die-cast aluminium
Seals	nitrile rubber, polyurethane
Actuators	technopolymer
Spool	aluminium

### ELECTRIC CHARACTERISTICS

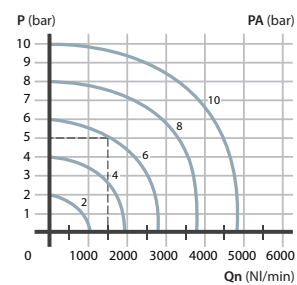
	G1/8	G1/4	G1/2
Electropilot	U1		U2
Coil	DA		DB
Power consumption	3,5 W (DC) - 5 VA (AC)		11 W (DC) - 10 VA (AC)
Connector	AM-5110		AM-5111
Voltage	12 V DC - 24 V DC - 24 V AC - 110 V AC - 230 V AC		
Manual override	with 2 position screw		

### Flow rate characteristics

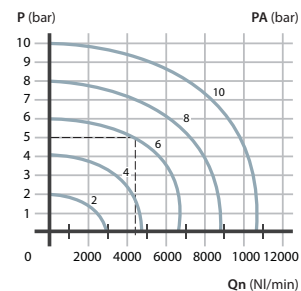
>> G1/8



>> G1/4



>> G1/2



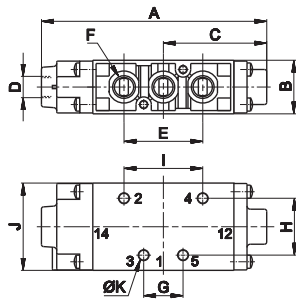
P = Working pressure  
PA = Supply pressure  
Qn = Flow rate

Single/double **pneumatic impulse**



	Symbol	Connection	Control	Return	Pressure bar	Times (ms)		Weight Kg	Part no.
						En.	De-en.		
<b>SINGLE PNEUMATIC IMPULSE</b>									
5/2		G1/8	pneumatic amplified	pneumomechanical	1,8÷10	8	10	0,22	<b>AC-7100</b>
		G1/4			2,3÷10	10	10	0,23	<b>AC-8100</b>
		G1/2			2÷10	10	10	0,76	<b>AC-9100</b>
<b>DOUBLE PNEUMATIC IMPULSE</b>									
5/2		G1/8	pneumatic amplified	pneumatic amplified	1÷10	5	10	0,23	<b>AC-7120</b>
		G1/4			0,8÷10	6	6	0,21	<b>AC-8120</b>
		G1/2			0,8÷10	8	8	0,77	<b>AC-9120</b>

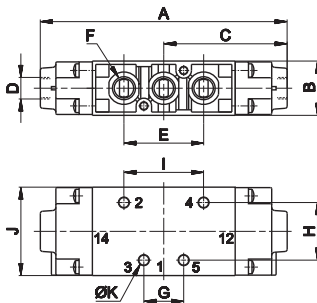
■ Single pneumatic impulse



- 1 = Supply port
- 2 - 4 = Use
- 3 - 5 = Exhaust
- 14 = Control
- 12 = Return

	A	B	C	D	E	F	G	H	I	J	K
<b>G1/8</b>	103	25	47	G1/8	36	G1/8	18	26	36	40	4,5
<b>G1/4</b>	117	27	54	G1/8	44	G1/4	22	40	60	50	5,5
<b>G1/2</b>	165	40	82,5	G1/8	80	G1/2	40	50	108	63	6,5

■ Double pneumatic impulse



- 1 = Supply port
- 2 - 4 = Use
- 3 - 5 = Exhaust
- 14 = Control
- 12 = Return

	A	B	C	D	E	F	G	H	I	J	K
<b>G1/8</b>	112	25	56	G1/8	36	G1/8	18	26	36	40	4,5
<b>G1/4</b>	126,5	25	63	G1/8	44	G1/4	22	40	60	50	5,5
<b>G1/2</b>	165	40	82,5	G1/8	80	G1/2	40	50	108	63	6,5

Technical modifications keep in reserve !

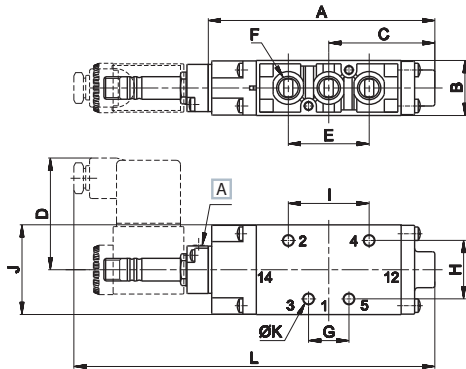
(2011/01)

Single/double electric impulse



	Symbol	Connection	Control	Return	Pressure bar	Times (ms)		Weight Kg	Part no.
						En.	De-en.		
<b>SINGLE ELECTRIC IMPULSE</b>									
5/2		G1/8	electric amplified	pneumomechanical	1,8÷10	18	20	0,27	<b>AC-7500</b>
		G1/4			2,3÷10	22	22	0,28	<b>AC-8500</b>
		G1/2			2÷10	23	30	1,1	<b>AC-9500</b>
<b>DOUBLE ELECTRIC IMPULSE</b>									
5/2		G1/8	electric amplified	electric amplified	1÷10	14	14	0,33	<b>AC-7520</b>
		G1/4			0,8÷10	14	14	0,31	<b>AC-8520</b>
		G1/2			0,8÷10	16	16	1,1	<b>AC-9520</b>

■ Single electric impulse

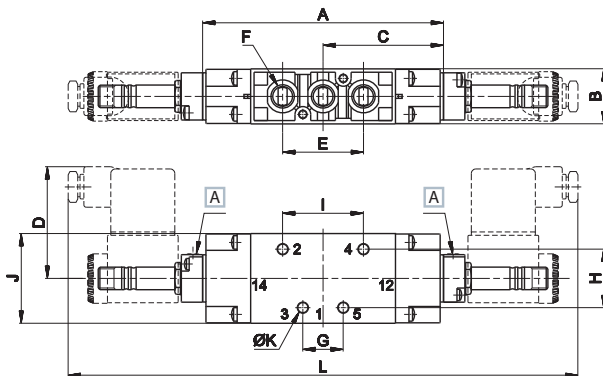


**A** Manual override

- 1 = Supply port
- 2 - 4 = Use
- 3 - 5 = Exhaust
- 14 = Control
- 12 = Return

	A	B	C	D	E	F	G	H	I	J	K	L
G1/8	101	25	47	50	36	G1/8	18	26	36	40	4,5	164
G1/4	116	27	54	50	44	G1/4	22	40	60	50	5,5	180
G1/2	165	40	83	48	80	G1/2	40	50	108	63	6,5	241

■ Double electric impulse



**A** Manual override

- 1 = Supply port
- 2 - 4 = Use
- 3 - 5 = Exhaust
- 14 = Control
- 12 = Return

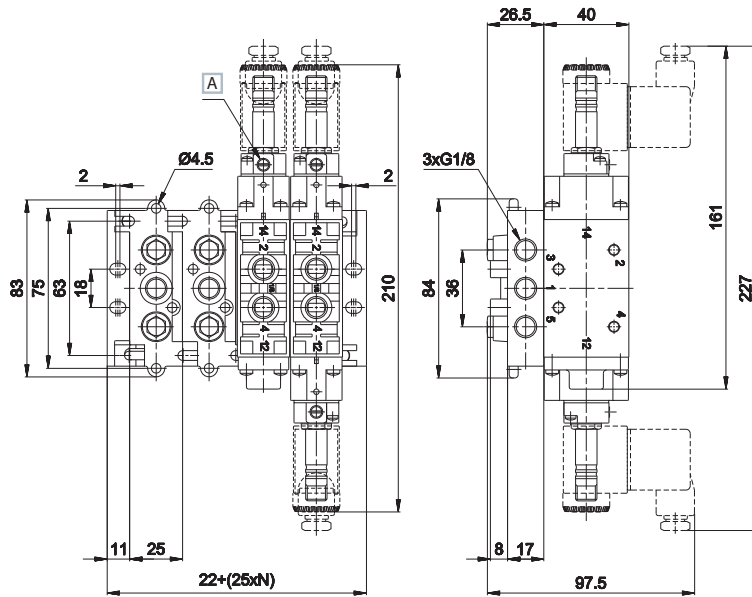
	A	B	C	D	E	F	G	H	I	J	K	L
G1/8	107	25	53,5	50	36	G1/8	18	26	36	40	4,5	227
G1/4	124	27	62	50	44	G1/4	22	40	60	50	5,5	252
G1/2	164	40	80,5	48	80	G1/2	40	50	108	63	6,5	317

For technical data of coils, refer to section "Accessories>Coils"  
 For external servoassisted pilot, use AM - 5148 plates (refer to next pages)  
 Electrovalves are supplied without coil, connector and locking ring

Technical modifications keep in reserve !

(2011/01)

Modular sub-base G1/8

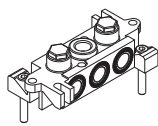


A Manual override

- 1 = Supply port
- 2 - 4 = Use
- 3 - 5 = Exhaust
- 14 = Control
- 12 = Return

AC-7900

AC-7905

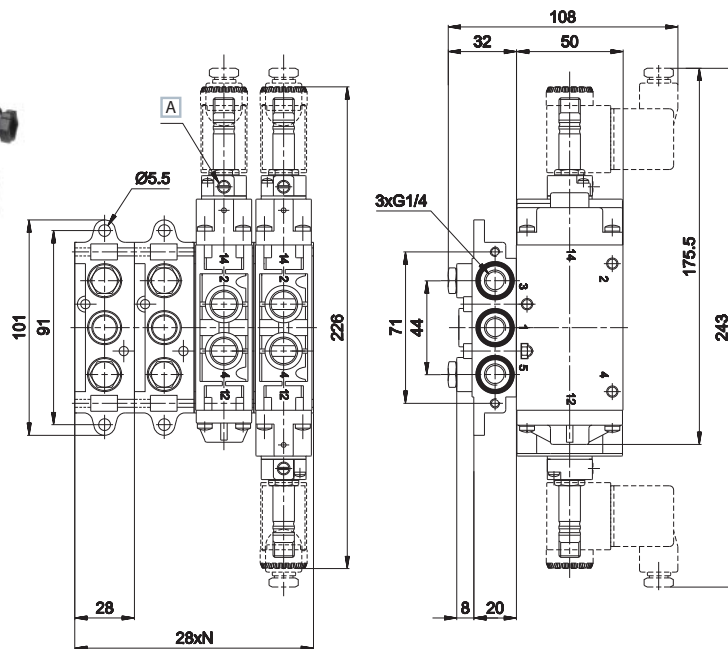


Sub-base with connections  
G1/8  
weight: 0,15 Kg



Inlet plate MIXED  
system 5/2 - G1/8  
weight: 0,06 Kg

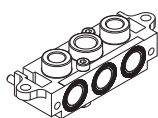
Modular sub-base G1/4



A Manual override

- 1 = Supply port
- 2 - 4 = Use
- 3 - 5 = Exhaust
- 14 = Control
- 12 = Return

AC-8900



Sub-base with threaded  
connections G1/4  
Screws are supplied  
separately  
weight: 0,22 Kg

Technical modifications keep in reserve !

(2011/01)