

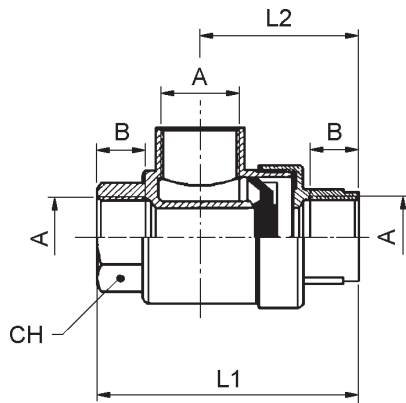
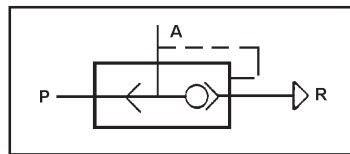
SIGNAL PROCESSING VALVES

1. QUICK EXHAUST VALVES

Quick exhaust immediately opens its outlet to exhaust, whenever the pressure of the air decreases at the inlet. This allows a speedy and a better exhaust and also it speeds up the work cycles.



Maximum operating pressure : 0.3 to 10 bar
 Ambient temperature : -18 to 70°C
 Body : nickel-plated OT 58 UNI 5705
 Seals : nylon PA6



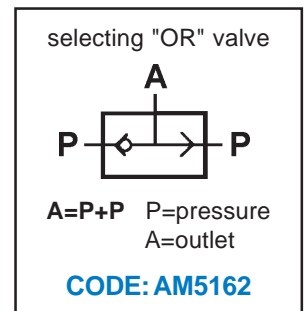
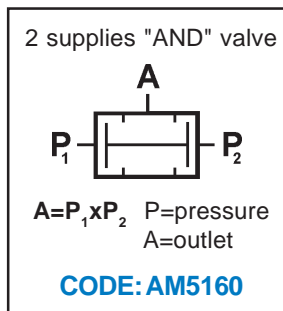
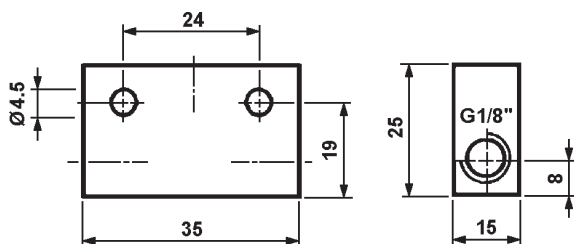
TYPE	A	B	L1	L2	CH
6050-1/8"	1/8"	7.5	42	27	15
6050-1/4"	1/4"	11	54	35	19
6050-3/8"	3/8"	11.5	60.5	38	22
6050-1/2"	1/2"	14	71	43	26
6050-3/4"	3/4"	16.3	87	53	32

2. AND & OR VALVES

These valves are suitable for power or control circuits and allow an output signal to be obtained through both input signals (AND) or through one only (OR).



Maximum operating pressure : 1.5 to 8 bar
 Ambient temperature : -10 to 75°C
 Maximum fluid temperature : 50°C
 Flow rate at 6 bar : 110 NI/min.
 Ø : 3.5 mm
 Seals : Oil-resistant rubber

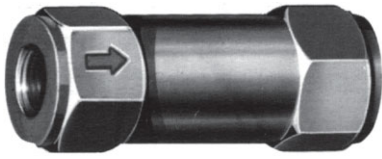


Technical modifications keep in reserve !

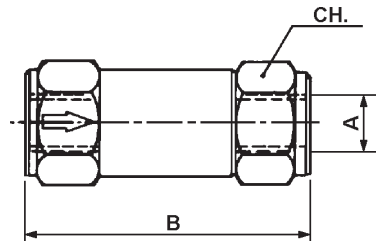
(97/08)

3. NON RETURN VALVES

Non return valves are devices allowing the passage of compressed air in one direction only.



Pressure : 2 - 8 bar
 Room temperature : -18 to +70°C
 Body : Nickel-plated Brass
 Spring : Stainless Steel AISI 302
 Piston : Nickel-plated Brass



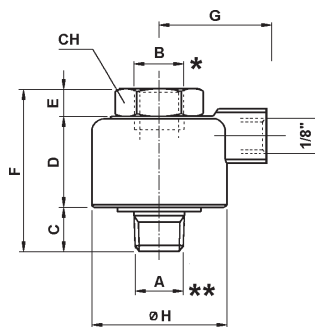
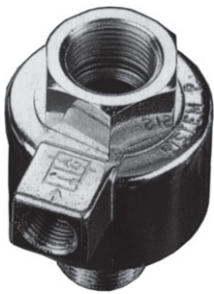
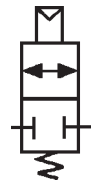
TYPE	A	B	CH
6062-M5	M5	26.5	8
6062-1/8"	1/8"	35.5	13
6062-1/4"	1/4"	42.5	17
6062-3/8"	3/8"	58	24
6062-1/2"	1/2"	64	24

4. BLOCKING VALVES



UNIDIRECTIONAL blocking valves blocks the flow only in one direction when the pilot pressure is cut off.

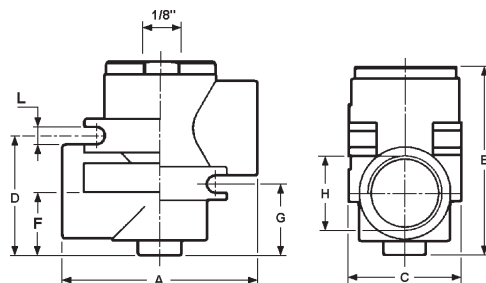
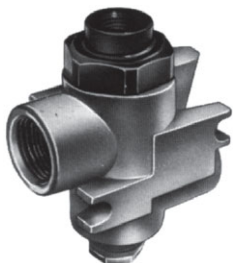
BIDIRECTIONAL blocking valves blocks the flow in both directions when the pilot pressure is cut off.



Operating pressure : 1 to 10 bar
 Minimum pilot pressure :
 - for series 63: approx. 4.5 bar, depending on work pressure
 - for series 73: approx. 2 bar, depending on work pressure
 Construction : brass, nylon & stainless steel
 Seals : oil-resistant rubber, polyurethane

TYPE	A **	B *	C	D	E	F	G	H	CH	Ø	Nl/min
738800 638800	1/8"	1/8"	10	20.5	6	36.5	25	30	17	5	650
734400 634400	1/4"	1/4"	11.5	25.5	5.5	42.5	28.5	37	22	7.5	1000
733300 633300	3/8"	3/8"	14	32.5	6	52.5	32	46	30	9	1900

UNIDIR BIDIR * CONIC BSP ** CYLINDERIC BSP



Operating & pilot pressure : 1.5 to 10 bar
 Ambient & fluid temperature : -20 to 80°C
 Body : Die cast body in zinc-alloy (mazak)
 Seals : oil-resistant rubber

TYPE	A	B	C	D	F	G	H	L	Ø	Nl/min
AM5501 AM5511	46	58	24	31	20	18.5	1/4"	4.25	6.5	620
AM5503 AM5513	50	65	28	35	21	24.5	3/8"	5.25	9.5	1500
AM5504 AM5514	67	81	40	46	27	28.5	1/2"	6.25	15	3500

UNIDIR BIDIR

Technical modifications keep in reserve !

(2012/07)