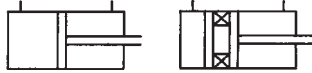


# ACCESSORIES for SHORT STROKE CYLINDERS

## 1. FIXING SYSTEMS

### Rear male hinge

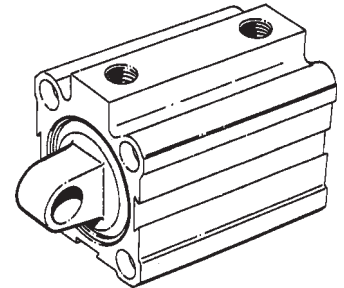
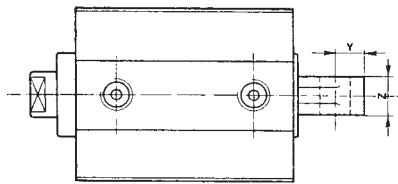
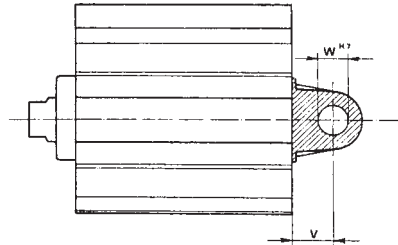
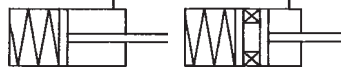
#### W 700 ... / W 700 ... M Series



#### W 760 ... / W 760 ... M Series



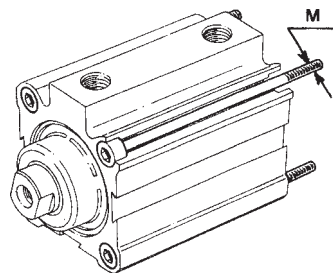
#### W 770 ... / W 770 ... M Series



Mass (g) stroke 0									
Cyl. Ø	W700.../W700...M			W760.../W760...M			W770.../W770...M		
	Non-magnetic Stroke 0	Magnetic Stroke 0	Increase per mm	Non-magnetic Stroke 0	Magnetic Stroke 0	Increase per mm	Non-magnetic Stroke 0	Magnetic Stroke 0	Increase per mm
12	-	-	-	-	-	-	-	-	-
16	82	110	1,4	67	87	1,4	78	106	1,4
20	107,5	132,5	2	82,5	97,5	2	98,5	123,5	2
25	158,5	178,5	2,85	119	139	2,85	145	165	2,85
32	276,5	335,5	4,06	237,5	296,5	4,06	255,5	315,5	4,06
40	470,5	506,5	5,47	402,5	438,5	5,47	442	478,5	5,47
50	417	473	6,4	349	405	6,4	379	435	6,4
63	681,5	813,5	9,7	574,5	756,5	9,7	631,5	913,5	9,7
80	1238,5	1323,5	14,85	1068,5	1153,5	14,85	1152,5	1237,5	14,85
100	1775	1975	19,7	1545	1745	19,7	1631	1831	19,7

Cyl. Ø	Y	Z	Ø W H7	v
12	-	-	-	-
16	5,5	9	6 H7	6,2
20	5,5	9	6 H7	6,5
25	6	12	6 H7	8
32	9	14	10 H7	11
40	10	16	12 H7	13
50	12	17	12 H7	16,5
63	14	21	16 H7	18
80	14	21	16 H7	16,5
100	17	25	20 H7	21

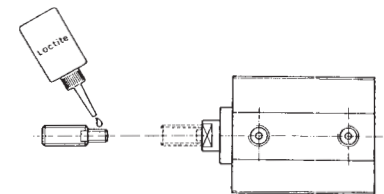
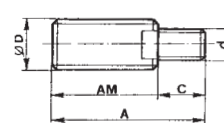
### Mounting screws



Cyl. Ø	12	16	20	25	32	40	50	63	80	100
M	3	3	4	4	5	5	6	8	8	10

NOTE: mounting of the magnetic cylinder bore Ø 16 mm requires non-magnetic (stainless steel) mounting screws

### Nipple



Cyl. Ø	A	AM	C	D	d	Part number
12	22,5	16	6,5	M 6 x 1	M 3	WF-50012
16	22,5	16	6,5	M 6 x 1	M 3	WF-50012
20	30	20	10	M 8 x 1,25	M 5	WF-50020
25	30	20	10	M 8 x 1,25	M 5	WF-50020
32	34	22	12	M 10 x 1,25	M 6	WF-50032
40	38	24	14	M 12 x 1,25	M 8	WF-50040
50	46	32	14	M 16 x 1,5	M 8	WF-50050
63	47	32	15	M 16 x 1,5	M 10	WF-50063
80	60	40	20	M 20 x 1,5	M 12	WF-50080
100	60	40	20	M 20 x 1,5	M 12	WF-50080