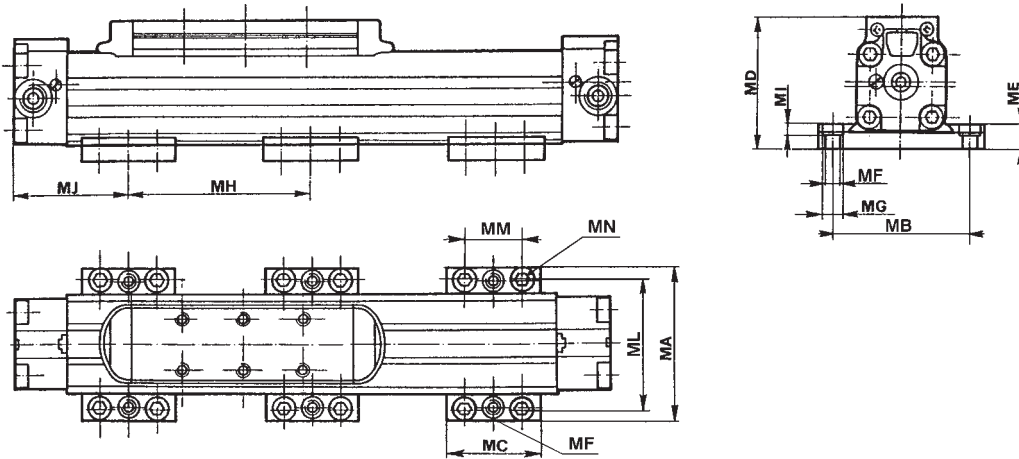


ACCESSORIES for RODLESS CYLINDERS

1. FIXING SYSTEMS

Mounting plate for rodless cylinder Series S1

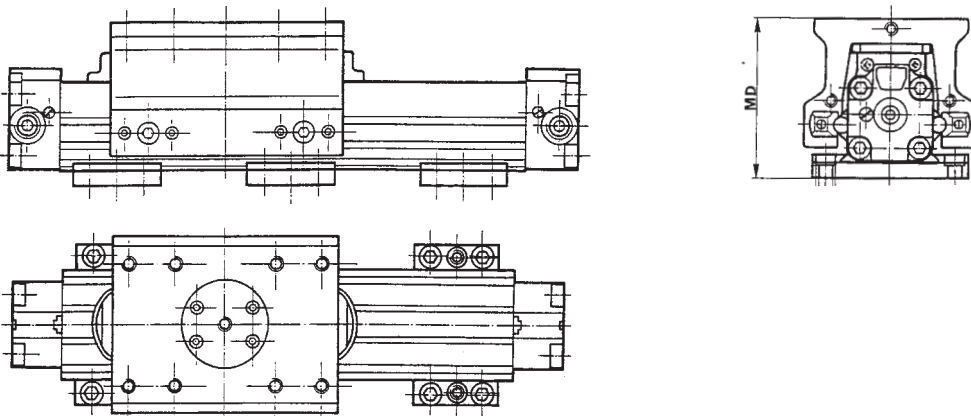


Cyl. Ø	MA	MB	MC	MD			ME	MF	MG	MH	MI	MJ	ML*	MM	MN	Mass (g)	Part number
				S1	S5	VL1											
25	78,5	63,5	50	65,6	79,8	82,3	12	M8	11	500 [■]	6,5	55	65,5	30	M6	310	SF - 12025
32	92	77,5	50	74,2	90,5	90,5	12	M8	11	600 [■]	5,5	60	79,5	30	M6	340	SF - 12032
40	117	96	60	95,8	116,6	116	15	M10	14	700 [■]	8	70	96	37,5	M8	660	SF - 12040
50	136	115	60	113	133,7	136,2	15	M10	14	800 [■]	8	70	115	37,5	M8	700	SF - 12050

■ Max. dimension in order to limit the deflection of the under its own weight

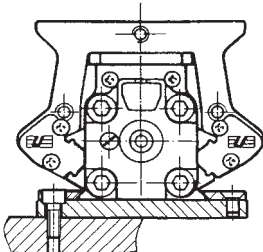
* For Ø 40-50 mm MB and ML are equal in value

Mounting plate for rodless cylinder Series S5



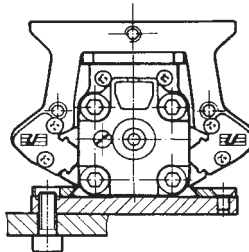
Plates are mounted by means of standard screws without disassembling any part of the cylinder (for the whole series).

Upper mounting

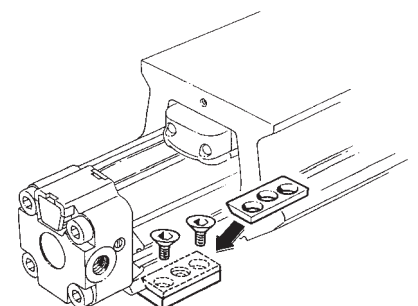


Cyl. Ø	
25 - 32	M6
40 - 50	M8

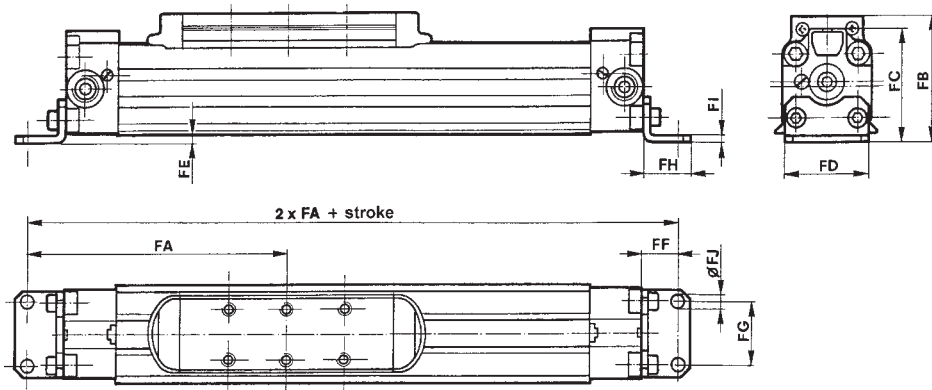
Lower mounting



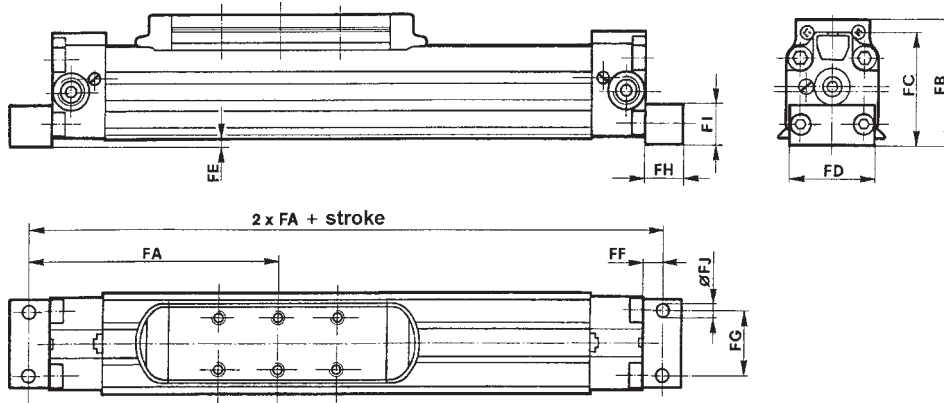
Cyl. Ø	
25 - 32	M8
40 - 50	M10



End - cap mounting bracket for rodless cylinder Series S1 Ø 25 - 32 mm



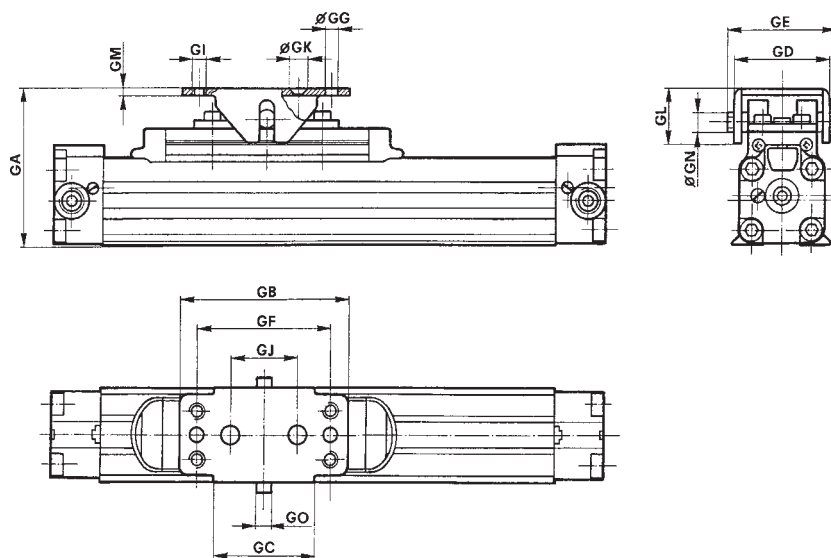
End - cap mounting bracket for rodless cylinder Series S1 Ø 40 - 50 mm



Ø	FA	FB	FC	FD	FE	FF	FG	FH	FI	FJ	Weight (g)	Ordering Code
25	116	58	48.8	40	0.5	16	27	22	2.5	5.5	34	SF - 13025
32	143.5	68.5	59.5	48	2.3	18.5	36	26	3	6.5	53	SF - 13032
40	162.5	86	74.5	63	1	12.5	30	25	25	9	116	SF - 13040
50	187.5	103.5	92	79	1.5	12.5	40	25	30	9	170	SF - 13050

End - cap mounting brackets are ONLY recommended for short strokes i.e. less than 400 mm.

Floating mounting bracket for rodless cylinder Series S1

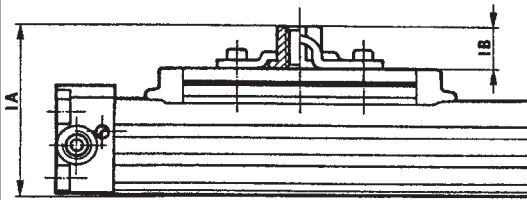


Ø	GA	GB	GC	GD	GE	GF	GG	GH	GI	GJ	GK	GL	GM	GN	GO	Weight (g)	Ordering Code
25	73.5/±2.5	60	40	44.5/±2.5	50	50	5.5	25	M5	16	5.5	20.5	3	8	6	142	SF - 24025
32	89/±4	100	60	56/±4	64	80	6.5	30	M6	40	7	30	4	12	8	362	SF - 24032
40	108.5/±4	100	60	56/±4	64	80	6.5	30	M6	40	7	30	4	12	8	362	SF - 24032
50	not foreseen																

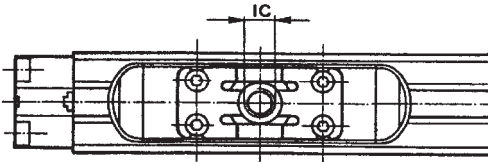
Technical modifications keep in reserve !

(2001/10)

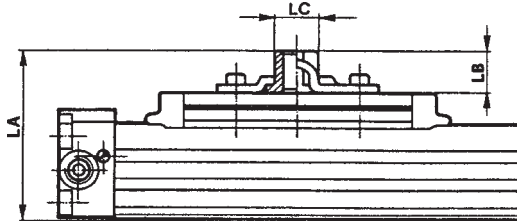
Female threaded bushing for rodless cylinder Series S1



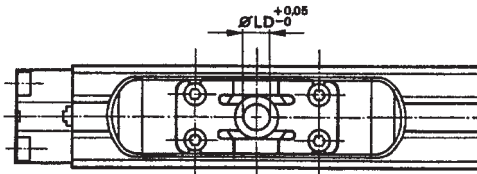
Ø	IA	IB	IC	Weight (g)	Ordering Code
25	75.5	18	M12	76	SF - 26025
32	87.2	21	M14	157	SF - 26032
40	108.5	21	M14	157	SF - 26032
50	not foreseen				



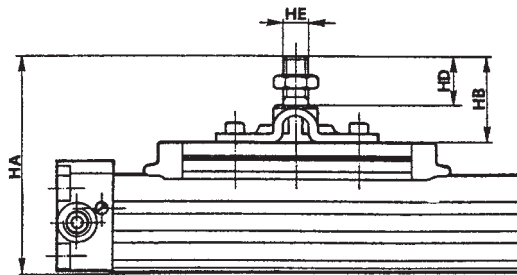
Female non-threaded bushing for rodless cylinder Series S1



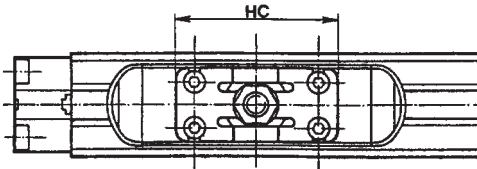
Ø	LA	LB	LC	LD	Weight (g)	Ordering Code
25	70.5	13	18	10.1	73	SF - 28025
32	82.7	16.5	22	12	152	SF - 28032
40	102.2	16.5	22	12	152	SF - 28032
50	not foreseen					



Male threaded pin for rodless cylinder Series S1



Ø	HA	HB	HC	HD	HE	Weight (g)	Ordering Code
25	91	33.5	64	22	M12	105	SF - 27025
32	107.7	41.5	84	25	M14	260	SF - 27032
40	127.2	41.5	84	25	M14	260	SF - 27032
50	not foreseen						



Technical modifications keep in reserve !

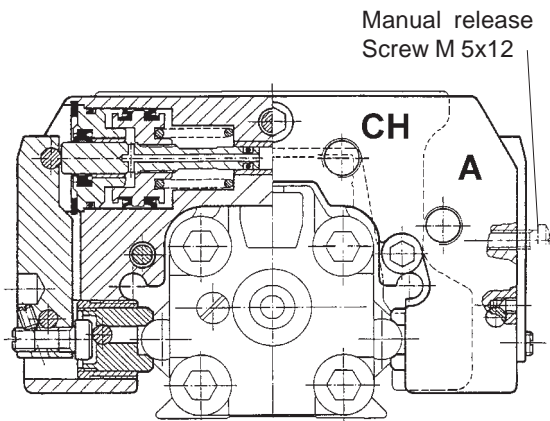
(2001/10)

2. LOCKING UNIT for rodless cylinder Series S5

The Univer locking unit for rodless cylinders enables accurate positional control of the carriage at any point along its stroke. The unit can be mounted onto either end of the carriage and the high mechanical locking thrust can be further increased by means of an additional air signal.

Medium: filtered air, with or without lubrication
 Working pressure: 2 - 8 bar
 Ambient temperature: - 20° - 80°C

**Operation life : in excess of 5 million cycles
 (under correct application)**

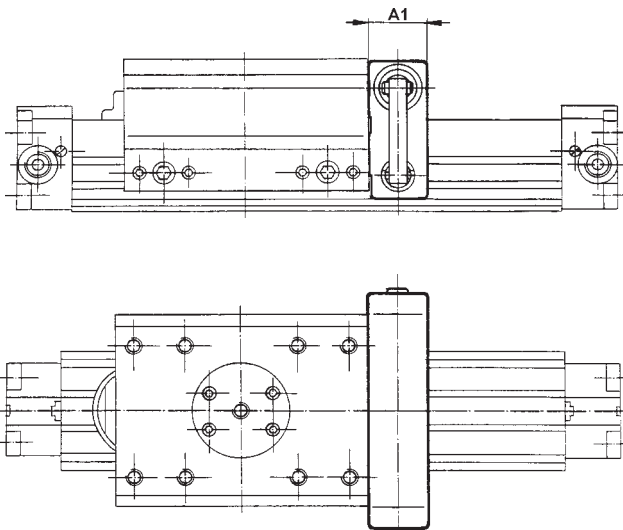


A = Release Ch = Pneumatic lock

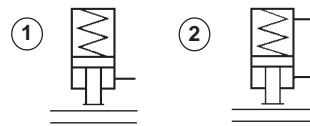
Ø	25	32	40	50
A = CH	M5		1/8"	

ATTENTION: by mounting the locking unit onto a Ø 25 cylinder, use a fitting with external diameter not greater than 15 mm.

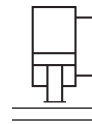
When using the pneumatic unit the max. pressure to be applied is 6 bar.



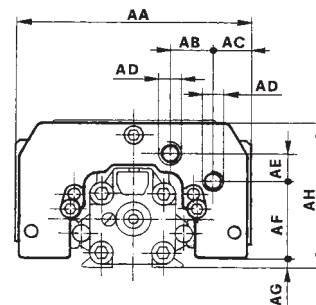
- ✓ Minimum release pressure: 4 - 5 bar.
- ✓ Braking mode maintains carriage position during the inward or outward motion.
- ✓ Easy mounting on either side of the carriage sides.
- ✓ Permanent manual release can be achieved by two M5 screws.
- ✓ One standard type available: mechanical springs hold the carriage firmly in position when there is no control air signal (refer to fig. 1).
 The mechanical locking unit is also capable of accepting an additional pneumatic control to amplify the locking thrust (see fig. 2).



- ✓ Upon request, the locking unit can be supplied with pneumatic control.



- ✓ Control unit: LX-7130 (pneumatic/mech. spring option) or LX-7150 (pneumatic/pneumatic option).



Ø	AA	AB	AC	AD	AE	AF	AG	AH	AI	Weight (g) stroke "0"	Weight of locking unit	Total weight	Ordering Code
25	120	24.5	23	M5	16.5	34.5	5	71.5	32	1628	350	1978	L6 - S5025
32	132	25.3	23.7	1/8"	17.2	42.3	6.5	81.5	32	2830	460	3290	L6 - S5032
40	150	26	32	1/8"	18.2	58.3	9	105	40	6000	820	6820	L6 - S5040
50	164	26	36	1/8"	19.8	72.5	12.7	125.7	51	9948	1450	11398	L6 - S5050

Technical modifications keep in reserve !

(2008/08)