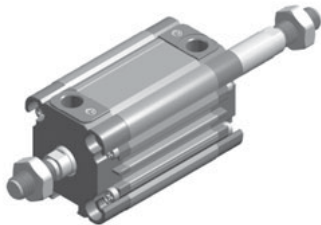


OTHER CYLINDERS (technical documentation on request)



Different possible executions for K, KD, RP, RS, W such as single acting, through rod, tandem for double force, multi-position, longer cushioning and non-rotating



Oval cylinders series OV for (non-rotating) applications with low construction height



Tandem series - double force



Multi-position Opposed series

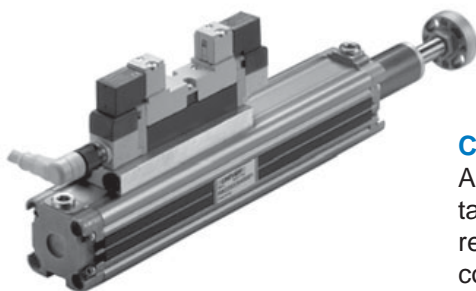


Multi-position Two-position series



Stainless steel cylinders

AISI 304/316 for ISO 6431 (D32-200) and micro ISO 6432 (D16-25)



Cylinders with integrated solenoid valve.

Also possible with VDMA valves where pressure and exhaust take place directly from the connection plate with possibility to regulate the exhaust. It is possible to operate the electrical connection M12 also from a PLC.



Guided compact cylinders

The guided compact cylinders JL series are studied for applications which need reduced dimensions and in case anti-rotation has to be guaranteed.

- **Typical applications:** thrust transport and lifting of pieces (LIFTER), stop function (STOPPER)
- **Bores:** 12 - 16 - 20 - 25 - 32 - 40 - 50 - 63
- **Versions:** guide on bearings (JLS) ideal for high side loads, guide on bearings with ball recirculation (JLV) suitable for high precision applications and uniform speed
- **Fixing:** 3 type fixing (pierced hole bolt, back tapped hole, bottom tapped hole)
- **Connexions:** on two sides
- **Sensors:** flush-mounted on two sides
- **Cushionings:** mechanical limit switches

