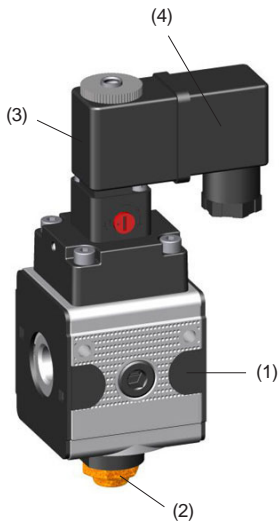
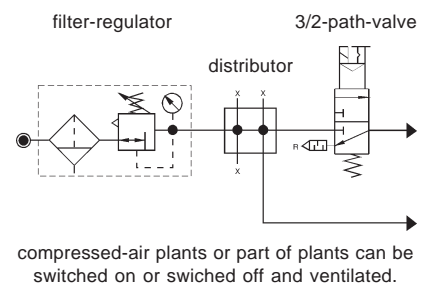
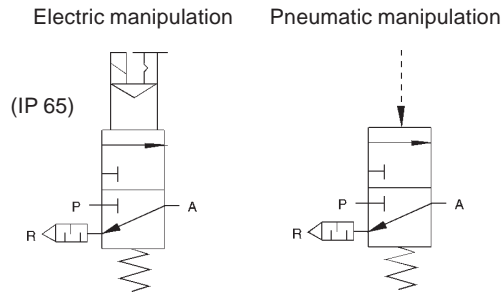


8. MULTI-FIX 3/2 VALVES



Cod.	Port size	Nominal discharge	Weight	Options
S11	G 1/4"	Qn 870 l/min.	0,446 kg.	I = Pneumatic
S33	G 1/2"	Qn 4000 l/min.	1,050 kg	I = Pneumatic
S54	G 3/4"	Qn 12500 l/min.	1,490 kg.	I = Pneumatic
S55	G 1"	Qn 12500 l/min.	1,490 kg.	I = Pneumatic

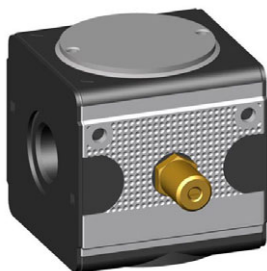


- (1) CONTROL VALVE
- (2) SILENCER (included)
- (3) COIL (included; can also be ordered as spare part)
- CODE 9.90XX.00.102 MC24 COIL 24VDC
- 9.90XX.00.103 MC24 COIL 24VAC
- 9.90XX.00.104 MC230 COIL 230VAC
- (4) CONNECTOR (included; can also be ordered as spare part)
- CODE 9.90XX.00.026 MS11-26 CONNECTOR FOR COIL

Pressure - min 2 bar - max 10 bar

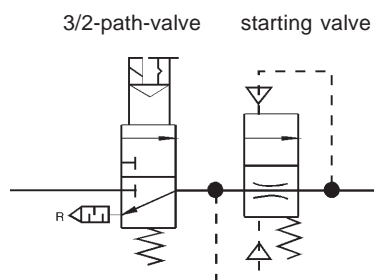
9. MULTI-FIX SOFT STARTING VALVES

After an emergency stop or breakdown of the machine is the position of the cylinders and the bistable valves not like the normal restposition. If you push the start button the machine brutally restarts due to lack of contre pressure. Cylinders move at high speed and full power till end-of-stroke. A soft starting valve brings the installation on pressure with a low adjustable flow. When a certain % of the incoming pressure is reached, the soft starting valve goes to full flow.



Cod.	Port size	Nominal discharge	Weight
A11F	G 1/4"	Qn 1000 l/min.	0,310 kg.
A33F	G 1/2"	Qn 4000 l/min.	0,685 kg.
A54F	G 3/4"	Qn 12000 l/min.	1,480 kg.
A55F	G 1"	Qn 12000 l/min.	1,480 kg.

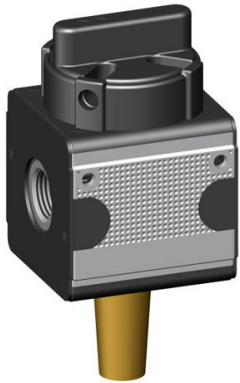
Duration of filling adjustable.



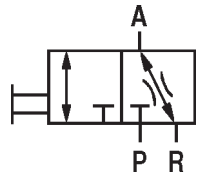
Extendible application

aeration of the mechanery over throttle setting of the starting valve.
When $P_2 \Rightarrow 50\%$ opens P_1 full profile.
Pressure release over R

10. MULTI-FIX BALL VALVES



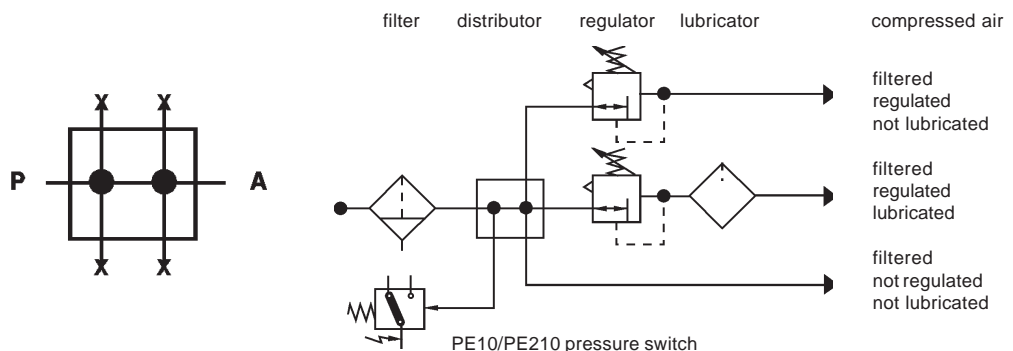
Cod.	Port size	Nominal discharge	Weight	Options
K00	G 1/8"	Qn 1800 l/min.	0,246 kg.	
K01	G 1/4"	Qn 1800 l/min.	0,246 kg.	
K11	G 1/4"	Qn 2800 l/min.	0,360 kg.	
K12	G 3/8"	Qn 2800 l/min.	0,360 kg.	
K33	G 1/2"	Qn 11000 l/min.	0,813 kg.	
K34	G 3/4"	Qn 11000 l/min.	0,813 kg.	
K54AP	G 3/4"	Qn 25000 l/min.	1,826 kg.	
K55AP	G 1"	Qn 25000 l/min.	1,826 kg.	
(threaded connection on 1 side)				
K54-2AP	G 3/4"	Qn 25000 l/min.	1,826 kg.	
K55-2AP	G 1"	Qn 25000 l/min.	1,826 kg.	
(threaded connections on both sides)				
K5-		Qn 25000 l/min.	1,826 kg.	
(without threaded connections)				



11. MULTI-FIX DISTRIBUTION MANIFOLD BLOCK



Cod.	Port size (P / A)	Other connections (x)	Nominal discharge (P -> A)	Options
Z11	G 1/4"	1/4", 1/4", 1/4", 1/8"	Qn 3300 l/min.	Can be equipped with pressure switch PE10 (flanged) or PE210 (1/8")
Z33	G 1/2"	3/8", 1/4", 1/4", 1/8"	Qn 11000 l/min.	
Z54AP	G 3/4"	1/2", 1/2", 1/8"	Qn 25000 l/min.	
Z55AP	G 1"	1/2", 1/2", 1/8"	Qn 25000 l/min.	
(threaded connection on 1 side)				
Z54-2AP	G 3/4"	1/2", 1/2", 1/8"	Qn 25000 l/min.	
Z55-2AP	G 1"	1/2", 1/2", 1/8"	Qn 25000 l/min.	
(threaded connections on both sides)				
Z5-		1/2", 1/2", 1/8"	Qn 25000 l/min.	
(without threaded connections)				



Technical modifications keep in reserve !

(2019/01)