

7. CENTRAL EXHAUST FINE-FILTER/SILENCERS

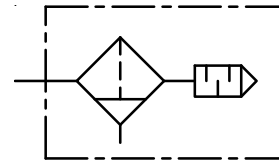
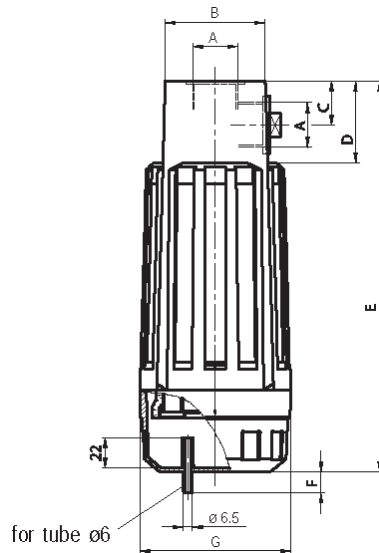
ITEM	FSD33	FSD34	FSD55
Port size	G 1/2"	G 3/4"	G 1"
Description	3 graduated coalescence-filter		
Mounting	Vertically, threaded connection on the top and side		
Drain model	Overflow for tube diameter inside $\varnothing 6$		
Supply pres.	Pe 10 bar		
Residual oil concent	0,01 mg/m ³ filter efficiency > 99,99 %		
Reduction of noise	ca. 40 dB(A) (Pe=5 bar, Qv=2000 l/min. and 1 m distance to the equipment)		
Filter change	min. once in a year		
Temp.	Max. 60° C		
Weight	0,735 kg	0,700 kg	1,250 kg



Filter change: min. once a year

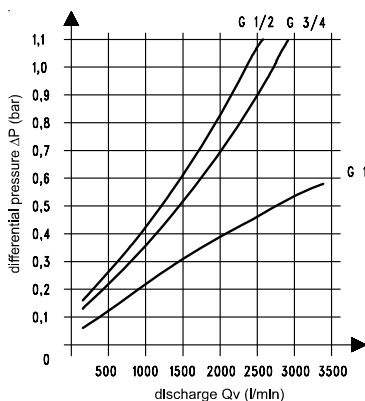
*Filter element: 9.4033.06.700 (FSD33/34)

*Filter element: 9.4055.06.700 (FSD55)

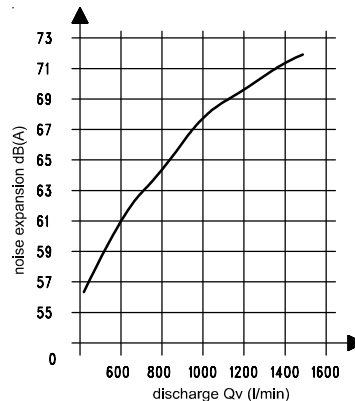


Type	A	B	C	D	E	F	G
FSD.33	G 1/2	62	26	48	215	15	ø90
FSD.34	G 3/4						
FSD.55	G 1	73	32	60	300		ø110

Flow characteristics



Noise expansion



ordering indication

FSD. ** *

type

1 port size **2** option

Port size
33 G 1/2"
34 G 3/4"
55 G 1"

example: **FSD33**