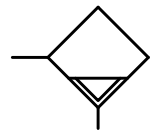
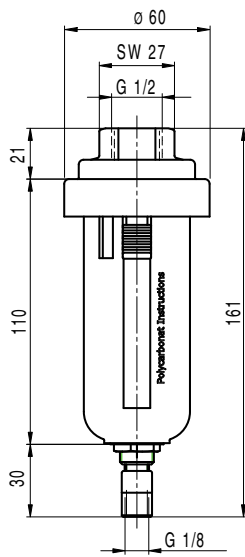


## 9. AUTOMATIC CONDENSATION DRAIN



bowlguard  
included

Port size	G 1/2"
Description	Condensation drain with auto drain
Mounting	Vertically, drain plug at bottom
Pressure range	Pe 1,5 bar to 16 bar
	Valve opens at Pe < 1,5 bar
Temp.	Max. 50° C
Bowl volume	Max. 49 cm <sup>3</sup>
Drain model	Fully automatic condensate drain
Fixing	Install in pipe line
Weight	0,185 kg.
<b>Cod.</b>	<b>KA212AM</b>



Technical modifications keep in reserve !

## 10. SLIDE VALVES (with exhaust)



Cod.	Passage (mm) (FULL)	Dimensions (mm) (L x H)	Temp.: -10° -> +80° C Press.: 0 -> 16 bar
6060-1/8"	4	48 x 25	
6060-1/4"	7	58 x 30	
6060-3/8"	10	68 x 35	
6060-1/2"	14	80 x 40	

(2009/01)