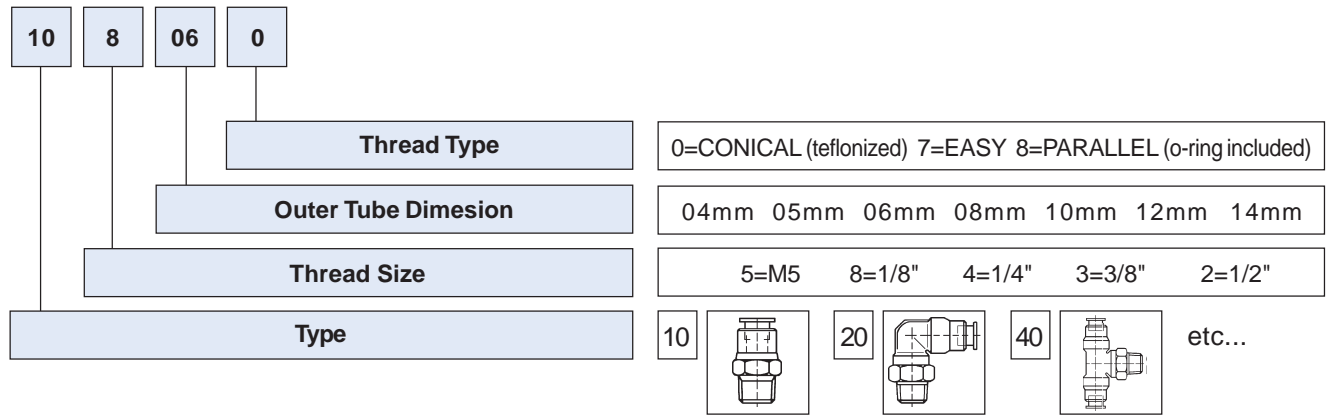


PUSH-IN FITTINGS

General Specifications:	Material	: Nickel-plated Brass (or Acetyl Resin for Easy Series)
	Max. Pres. / Work. Temp.	: 12 bar / -10 until +80° C
	Thread	: CM = Conical Male / PM = Parallel Male
	Recommended Pipes	: Polyamide (PA) / Polyurethane (PU)

Codification Key:



Technical modifications keep in reserve !

(2018/04)



Code	CM-Ø
108040	1/8"-D4
108060	1/8"-D6
108080	1/8"-D8
104040	1/4"-D4
104060	1/4"-D6
104080	1/4"-D8
104100	1/4"-D10
104120	1/4"-D12
103080	3/8"-D8
103100	3/8"-D10
103120	3/8"-D12
103140	3/8"-D14
102100	1/2"-D10
102120	1/2"-D12
102140	1/2"-D14

Code	PM-Ø
105048	M5-D4
105068	M5-D6
108068	1/8"-D6
108088	1/8"-D8
104048	1/4"-D4
104068	1/4"-D6
104088	1/4"-D8
103088	3/8"-D8
103108	3/8"-D10
103128	3/8"-D12
102128	1/2"-D12
102148	1/2"-D14



Rotative



Rotative



Code	CM-Ø
208040	1/8"-D4
208060	1/8"-D6
208080	1/8"-D8
204040	1/4"-D4
204060	1/4"-D6
204080	1/4"-D8
204100	1/4"-D10
204120	1/4"-D12
203080	3/8"-D8
203100	3/8"-D10
203120	3/8"-D12
203140	3/8"-D14
202100	1/2"-D10
202120	1/2"-D12
202140	1/2"-D14

Code	PM-Ø
205048	M5-D4
205068	M5-D6
208068	1/8"-D6
208088	1/8"-D8
204068	1/4"-D6
204088	1/4"-D8



Code	PM-Ø
105408	M5-D4



Code	CM-Ø
278060	1/8"-D6
278080	1/8"-D8
274060	1/4"-D6
274080	1/4"-D8
273100	3/8"-D10 (with shut-off valve)



Code	Ø
120042	D4
120062	D6
120082	D8
120102	D10
120122	D12
120142	D14



Rotative



Code	CM-Ø
338040	1/8"-D4
338060	1/8"-D6
338080	1/8"-D8
334060	1/4"-D6
334080	1/4"-D8
334100	1/4"-D10
333100	3/8"-D10
333120	3/8"-D12



Rotative



Code	PM-Ø
205408	M5-D4



Code	Ø-Ø
244062	D4-D6
246082	D6-D8
246102	D6-D10
248102	D8-D10



Code	ØF-ØM
254062	D4-D6
254082	D4-D8
256082	D6-D8
256102	D6-D10
256122	D6-D12
258102	D8-D10
258122	D8-D12
258142	D8-D14
251122	D10-D12
251142	D10-D14
252142	D10-D14



Rotative



Code	PM-Ø
405068	M5-D6

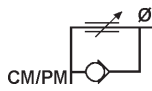
Code	CM-Ø
408040	1/8"-D4
408060	1/8"-D6
408080	1/8"-D8
404060	1/4"-D6
404080	1/4"-D8
404100	1/4"-D10
403080	3/8"-D8
403100	3/8"-D10
403120	3/8"-D12
403140	3/8"-D14
402100	1/2"-D10
402120	1/2"-D12
402140	1/2"-D14

Technical modifications keep in reserve !

(2018/04)



Rotative



Code	PM-Ø
465048	M5-D4
465068	M5-D6
Code	CM-Ø
478040	1/8"-D4
478060	1/8"-D6
458080	1/8"-D8
454060	1/4"-D6
454080	1/4"-D8
454100	1/4"-D10
453080	3/8"-D8
453100	3/8"-D10
453120	3/8"-D12
452120	1/2"-D12

(Regulator for cylinder)



Code	Ø
500042	D4
500062	D6
500082	D8
500102	D10
500120	D12
500140	D14



Code	Ø
700040	D4
700060	D6
700080	D8
700100	D10
700120	D12
700140	D14



Code	Ø
EVNR06	D6
EVNR08	D8
EVNR10	D10
EVNR12	D12

(Non-return valve)



Code	Ø
260040	D4
260060	D6
260080	D8
260100	D10
260120	D12



Code	Ø
600040	D4
600060	D6
600080	D8
600100	D10
600120	D12
600140	D14



Code	Ø
510042	D4
510062	D6
510082	D8



Code	Ø-B
800040	D4-M12x1
800060	D6-M15x1
800080	D8-M17x1
800100	D10-M20x1.5
800120	D12-M22x1.5



Code	PM-Ø
105048E	M5-D4
105068E	M5-D6
108047E	1/8"-D4
108067E	1/8"-D6
108087E	1/8"-D8
104067E	1/4"-D6
104087E	1/4"-D8
103087E	3/8"-D8
104107E	1/4"-D10
103107E	3/8"-D10
102107E	1/2"-D10
103127E	3/8"-D12
102127E	1/2"-D12



Code	Ø
500040E	D4
500060E	D6
500080E	D8
500100E	D10
500120E	D12



Code	Ø
600040E	D4
600060E	D6
600080E	D8
600100E	D10
600120E	D12

TIP TIP TIP

EASY-fittings also fits best for industrial vacuum (because of the special form of the washer)



Rotative



Code	PM-Ø
205048E	M5-D4
205068E	M5-D6
208047E	1/8"-D4
208067E	1/8"-D6
208087E	1/8"-D8
204067E	1/4"-D6
204087E	1/4"-D8
203087E	3/8"-D8
204107E	1/4"-D10
203107E	3/8"-D10
202107E	1/2"-D10
203127E	3/8"-D12
202127E	1/2"-D12



Rotative



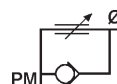
Code	PM-Ø
208067EL	1/8"-D6
208087EL	1/8"-D8
204067EL	1/4"-D6
204087EL	1/4"-D8



Code	Ø
700040E	D4
700060E	D6
700080E	D8
700100E	D10
700120E	D12



Rotative



Code	PM-Ø
ED5048	M5-D4
ED8047	1/8"-D4
ED8067	1/8"-D6
ED4067	1/4"-D6
ED8087	1/8"-D8
ED4087	1/4"-D8

(Regulator for cylinder)

Technical modifications keep in reserve !

(2018/12)