

## SCREW-UP FITTINGS

<b>General Specifications:</b>	Material	: Nickel-plated Brass
	Max. Pres. / Temp.	: 15 bar / -18 until +70° C
	Thread	: <b>CM</b> = Conical Male / <b>PM</b> = Parallel Male
	Recommended Pipes	: Polyethylene ( <b>PE</b> ) / CoPolyamide ( <b>COPA/PU</b> ), see page 4.14



Code	Ø-CM
1000-6/4-1/8"	6/4-1/8"
1000-6/4-1/4"	6/4-1/4"
1000-8/6-1/8"	8/6-1/8"
1000-8/6-1/4"	8/6-1/4"
1000-8/6-3/8"	8/6-3/8"
1000-10/8-1/4"	10/8-1/4"
1000-10/8-3/8"	10/8-3/8"
1000-10/8-1/2"	10/8-1/2"
1000-12/10-3/8"	12/10-3/8"
1000-12/10-1/2"	12/10-1/2"



Rotative

Code	Ø-PM
1015-6/4-1/8"	6/4-1/8"
1015-6/4-1/4"	6/4-1/4"
1015-8/6-1/8"	8/6-1/8"
1015-8/6-1/4"	8/6-1/4"



Code	Ø-F
1030-6/4-1/8"	6/4-1/8"
1030-8/6-1/8"	8/6-1/8"
1030-8/6-1/4"	8/6-1/4"
1030-8/6-3/8"	8/6-3/8"
1030-12/10-3/8"	12/10-3/8"



Code	Ø-B
1050-6/4	6/4-M10x1
1050-8/6	8/6-M12x1
1050-10/8	10/8-M14x1
1050-12/10	12/10-M16x1



Rotative



Code	Ø-CM
1010-8/6-1/4"	8/6-1/4"

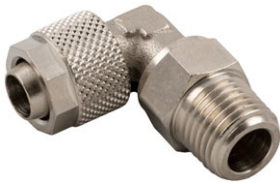
Code	Ø-PM
1021-4/2.7-M5	4/2.7-M5
1020-4/2.7-1/8"	4/2.7-1/8"
1021-6/4-M5	6/4-M5
1020-6/4-1/8"	6/4-1/8"
1020-6/4-1/4"	6/4-1/4"
1020-8/6-1/8"	8/6-1/8"
1020-8/6-1/4"	8/6-1/4"
1020-10/8-1/4"	10/8-1/4"

Code	Ø-Ø
1040-6/4	6/4-6/4
1040-8/6-6/4	8/6-6/4
1040-8/6	8/6-8/6
1040-10/8-6/4	10/8-6/4
1040-10/8-8/6	10/8-8/6
1040-10/8	10/8-10/8
1040-12/10	12/10-12/10



Code	Ø-CM
1100-6/4-1/8"	6/4-1/8"
1100-6/4-1/4"	6/4-1/4"
1100-8/6-1/8"	8/6-1/8"
1100-8/6-1/4"	8/6-1/4"
1100-8/6-3/8"	8/6-3/8"
1100-10/8-1/4"	10/8-1/4"
1100-10/8-3/8"	10/8-3/8"
1100-10/8-1/2"	10/8-1/2"
1100-12/10-3/8"	12/10-3/8"
1100-12/10-1/2"	12/10-1/2"





Rotative



Code	Ø - CM
1110-6/4-1/8"	6/4-1/8"
1110-6/4-1/4"	6/4-1/4"
1110-8/6-1/8"	8/6-1/8"
1110-8/6-1/4"	8/6-1/4"
1110-10/8-1/4"	10/8-1/4"



Code	Ø - F
1120-6/4-1/8"	6/4-1/8"
1120-8/6-1/8"	8/6-1/8"
1120-8/6-1/4"	8/6-1/4"



Code	Ø - CM
1200-6/4-1/8"	6/4-1/8"
1200-6/4-1/4"	6/4-1/4"
1200-8/6-1/8"	8/6-1/8"
1200-8/6-1/4"	8/6-1/4"
1200-8/6-3/8"	8/6-3/8"
1200-10/8-1/8"	10/8-1/8"
1200-10/8-1/4"	10/8-1/4"
1200-10/8-3/8"	10/8-3/8"
1200-12/10-3/8"	12/10-3/8"



Rotative



Code	Ø - PM
1215-6/4-1/8"	6/4-1/8"
1215-6/4-1/4"	6/4-1/4"
1215-8/6-1/8"	8/6-1/8"
1215-8/6-1/4"	8/6-1/4"
1215-10/8-1/4"	10/8-1/4"



Code	Ø
1230-6/4	6/4
1230-8/6	8/6
1230-10/8	10/8
1230-12/10	12/10



Rotative



Code	Ø - PM
1115-6/4-1/8"	6/4-1/8"
1115-6/4-1/4"	6/4-1/4"
1115-8/6-1/8"	8/6-1/8"
1115-8/6-1/4"	8/6-1/4"
1115-10/8-1/4"	10/8-1/4"



Code	Ø
1130-6/4	6/4
1130-8/6	8/6
1130-10/8	10/8
1130-12/10	12/10



Rotative



Code	Ø - CM
1210-6/4-1/8"	6/4-1/8"
1210-6/4-1/4"	6/4-1/4"
1210-8/6-1/8"	8/6-1/8"
1210-8/6-1/4"	8/6-1/4"
1210-10/8-1/4"	10/8-1/4"



Code	Ø - CM
1220-6/4-1/8"	6/4-1/8"
1220-6/4-1/4"	6/4-1/4"
1220-8/6-1/8"	8/6-1/8"
1220-8/6-1/4"	8/6-1/4"
1220-8/6-3/8"	8/6-3/8"
1220-10/8-1/8"	10/8-1/8"
1220-10/8-1/4"	10/8-1/4"
1220-10/8-3/8"	10/8-3/8"
1220-12/10-3/8"	12/10-3/8"



Code	Ø
1300	8/6



Code	PM
51410-M5 NYLON	M5
51410-1/8" NYLON	1/8"
51410-1/4" NYLON	1/4"
51410-3/8" NYLON	3/8"

Code	PM
51420-1/8" NYLON	1/8"
51420-1/4" NYLON	1/4"
51420-3/8" NYLON	3/8"

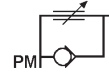
Code	Ø-D
1500-4/2.7-M5	4/2.7-M5
1500-6/4-M5	6/4-M5
1500-6/4-1/8"	6/4-1/8"
1500-6/4-1/4"	6/4-1/4"
1500-8/6-1/8"	8/6-1/8"
1500-8/6-1/4"	8/6-1/4"
1500-10/8-1/4"	10/8-1/4"
1500-10/8-3/8"	10/8-3/8"
1500-12/10-3/8"	12/10-3/8"

Code	Ø-F
1700-6/4	6/4-M10
1700-8/6	8/6-M12
1700-10/8	10/8-M14
1700-12/10	12/10-M16

(Nut)

Code	Ø-F
1710-6/4	6/4-M10
1710-8/6	8/6-M12
1710-10/8	10/8-M14
1710-12/10	12/10-M16

(Nut with spring)



Code	PM
8900-1/8"	1/8"
8900-1/4"	1/4"

(Regulator for cylinder)

Code	PM
51430-1/8" NYLON	1/8"
51430-1/4" NYLON	1/4"
51430-3/8" NYLON	3/8"

Code	Ø-D
1510-8/6-1/4"	8/6-1/4"
1510-12/10-3/8"	12/10-3/8"

Code	D
1610-M5	M5
1610-1/8"	1/8"
1610-1/4"	1/4"
1610-3/8"	3/8"

(Washer)

Code	Ø-PM
1027-6/4-1/4"	6/4-1/4"
1027-8/6-1/4"	8/6-1/4"
1027-10/6.5-1/4"	10/6.5-1/4"
1027-12/8-3/8"	12/8-3/8"